



**Complete Print and Finishing Solutions
Pre-Press to Press,
to Bindery and Packaging**



Professional Systems Consultation
Equipment and Software Service
Proven Product Lines
New and Used Equipment Inventory
State-of-the-Art Facilities



“TAKING CARE OF YOUR BUSINESS IS OUR SPECIALTY”

As your business partner, the success of **Print & Finishing Solutions (PFS)** relies on the success of our customers and vendors. This philosophy is reflected in our motto, *“Taking care of your business is our specialty.”* Our team approach promotes an atmosphere of cooperation, where the primary goal is working together for success.

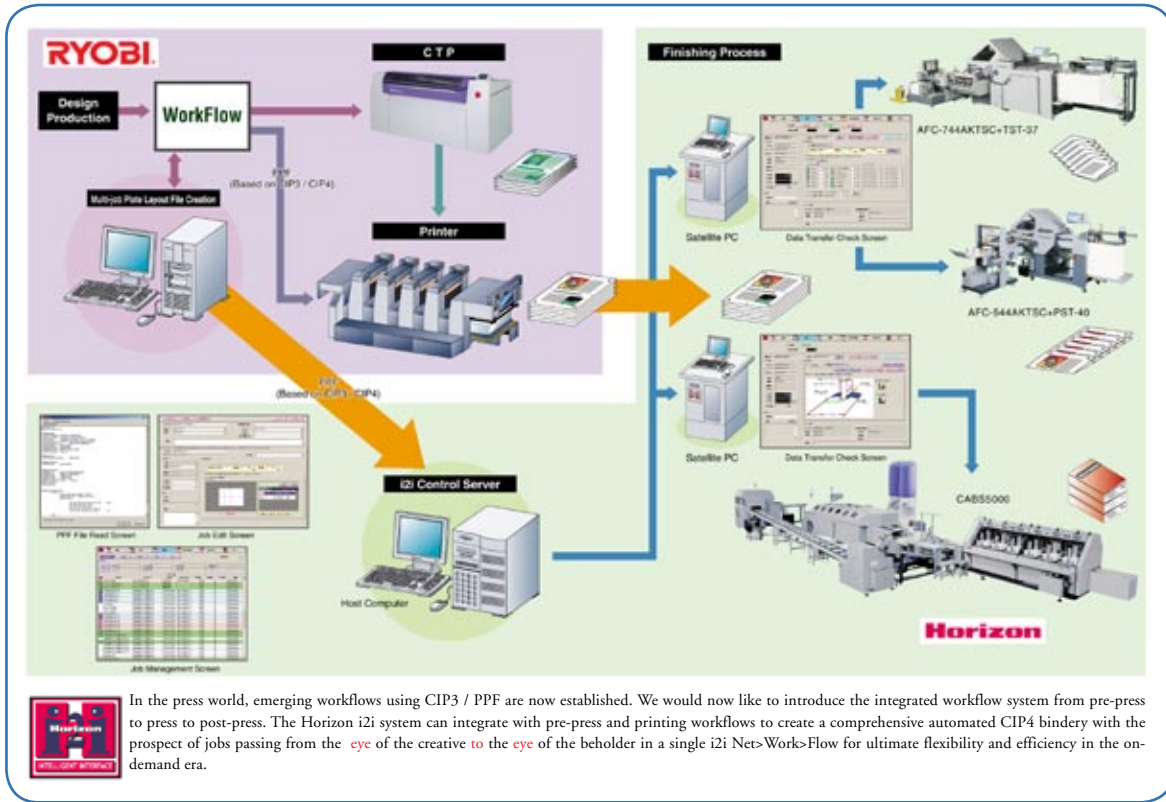
It is the goal of PFS to support our customers and their print-related machinery for the long-term with intelligent, well-trained sales and service personnel.



The PFS working showroom features new and used machinery and is available for live demonstrations. Please contact your sales professional today at (800) 398-5283 to schedule an appointment.



The PFS Service Team specializes in pre-press, press and bindery machinery. We offer local service, preventative maintenance programs, and 24-hour service.



Is your company operating in the 21st Century? Become a PFS Business Partner today!

TABLE OF CONTENTS

Pre-Press.....	4
Binding Systems.....	17
Collating / Bookletmaking.....	12-13
Cutters.....	9
Digital In-Line Finishing.....	19
Drills.....	8
Folding Systems.....	11
Number, Perf & Score.....	10
Padding.....	18
Paper Cutters.....	9
Paper Drills.....	8
Perfect Binders.....	14-15
Pre-Press.....	4
Printing Presses.....	5-7
Punch Systems.....	16
Shrink Wrap.....	18
Stock Carts.....	18
UV Coating.....	10

RIPs & Servers - Software - Scanning Devices - Proofing



The pre-press solution requires the proper computer hardware, software, scanning devices and proofing printers. PFS represents Xitron/Xenith, GregtagMacbeth, Epson, RYOBI and other manufactures to handle application and system requirements. Systems support is available directly through PFS.

Computer To Plate (CTP)



Mitsubishi Eco 1630III

The Eco 1630III is a completely automated, digital plate-setting system. Versatile and cost-efficient, it is designed to increase your CTP capabilities for both black-and-white and spot-color application, while decreasing your chemistry consumption and cost.

The SDP-Eco 1630III uses up to two-thirds less processing chemistry than current analog and digital systems. It features a self-contained processor that operates with two new, ready-to-use chemistries for processing Silver DigiPlate™ paper on polyester plate materials.

Plate sizes range from 9" x 8-5/8" to 16-5/16" x 22-13/16". The Eco 1630III produces up to 2400 dpi and up to 175 lpi with output production of up to 81 plates per hour.



Mitsubishi DPX2

The DPX2 Platesetting System is an internal drum device that images 175-line, perfectly registered, press-ready Silver DigiPlate® material directly from your desktop. The DPX2 Platesetter delivers processed, dried, pre-punched, press-ready plates quickly and efficiently so you can compete for short-run, process color jobs. Plates are produced in under four minutes at 2,540 dpi.

Plate sizes ranging from 10 x 10" to 8.1 x 21.6". The DPX2 produces up to 3,600 dpi and up to 175 lpi with automatic plate loading on an internal drum with Mitsubishi polyester plate material.

3200 Series

3200CD Single Color (Pictured) 3200PFA Automatic Perfector

Second color print unit is available.

A3-Plus Size Portrait Format Printing Presses
Max. Paper Size: 13.39 x 17.72"
Max. Printing Speed: 10,000 sph

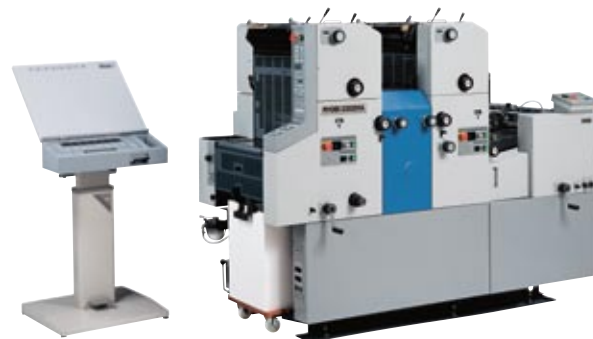


3302 Series

3302C 3302H Manual plate change 3302HA Semi-automatic Plate Changer 3302HA+PCS-F Semi-automatic Plate Changer & Printing Control Station

3302M/H/HA, the most popular 2-color press in the world is now available with semi-automatic plate loaders (HA) and remote (PCS-F) Printing Control System.

A3-Plus Size Portrait Format 2-Color Printing Presses
Max. Paper Size: 13.39 x 17.72"
Max. Printing Speed: 10,000 sph



3304 Series

3304H Manual plate change 3304HA Semi-automatic Plate Changer & Printing Control Station

RYOBI 3304HA is an A3-size, portrait-format 4-color offset press. It includes the RYOBI Super Dampener Continuous Dampening System to ensure a stable supply of dampening solution, as well as a spring-tension plate clamp system that readily accommodates both metal and polyester-based plates output from computer-to-plate systems. Also included with the 3304HA is the RYOBI semi-automatic plate changer, which makes changing plates significantly easier, and remote (PCS-F) Printing Control System.

A3-Plus Size Portrait Format 4-Color Printing Presses
Max. Paper Size: 13.39 x 17.72"
Max. Printing Speed: 10,000 sph



522GE/524GE

These presses include semi-automatic plate changers, which allows speedy and accurate plate changing.

The 524GE includes the RYOBI PCS-J printing control system and RYOBI Program Inking, which reduce color adjustment labor to realize short make-ready times.

A3-Plus Size 522GE 2-Color/524GE 4-Color
Presses
Max. Paper Size: 20.47 x 14.76"
Max. Printing Speed: 11,000 sph



520GX Series

The RYOBI 520GX series offset presses are specially designed for diverse, short-run and long-run printing of catalogs, high-quality art, packages, envelopes, and postcards with enhanced productivity and superior quality.

The newly-developed GX series features a semiautomatic plate changer, pull side guide and impression pressure preset systems, a suction tape feeder board, automatic cleaning device, PCS-H printing control system, and program inking. Available options include ink volume setting software, printing density control system, fully automatic convertible perfecting device, and tower coater. The GX series can be configured for printing with UV inks; including LED, and UV coating applications.

A3-Plus Size 524GX 4-Color/525GX 5-Color/526GX
6-Color Presses
Available with optional convertible perfecting device
Max. Paper Size: 20.47 x 14.76"
Max. Printing Speed: 15,000 sph



782GE/784GE

The 784E and 784EP (Fully-Automated Convertible Perfecting Device) offer a wealth of advanced functions in a compact body (1/3 smaller than the traditional 750 series).

B2-Plus Sizes 4-Color Offset Press
Max. Paper Size: 31 x 23.62"
Max. Printing Speed: 15,000 sph



750 Series

Quite possibly the world's perfect printing press, the 750 Series provides unsurpassed print quality, reliability, and state-of-the-art automation. The 750 offers U/V and aqueous chambered anilox coating, full automation including all preset, plate loaders, closed loop spectrophotometry, ink volume setter software, double diameter impression and transfer cylinders, superior inking capabilities, and 31 point stock capabilities!

B2-Size Multi-Color Offset Press
Available in 2-10 Color models
including optional Fully Automatic
Convertible Perfecting and Coating
Max. Paper Size: 29.5 x 23.6"
(31 X 23.6" can be fed)
Max. Printing Speed: 15,000 sph



920 Series

The 920 series offers full-sized performance with full-sized features. This press boasts a 19-roller inker, Ryobi-matic continuous dampening, semi-automatic plate loader, blanket washers, roller washers, the PCS-G Printing Control Console, program inking, ultrasonic double sheet detection, and much, much, more.

A1-Size 4 & 5-Color Offset Press
Max. Paper Size: 36.22 x 24.61"
Max. Printing Speed: 16,200 sph



1050 Series

In the flagship 42" RYOBI 1050 series, a new level of operability is achieved through advanced systems such as the RYOBI PQS, which enables inline printing quality control, and the RYOBI PCL-L dual-monitor printing control system. In addition, smooth linking with prepress and postpress lets you build the type of efficient digital workflow that helps boost your productivity.

B1-Size Multi-Color Offset Press
Available in 4-6 Color models
Max. Paper Size: 42.7 x 30.7"
Max. Printing Speed: 16,000 sph
Max. Paper Thickness: 39 point



Lassco



FMM-3



JO



MBM-55

Print & Finishing Solutions also carries a full line of light and medium duty, tabletop and floor-model paper drills from Lassco/Spinnit, Challenge, and MBM. Various economical models are designed for the office, copy center, and print shop environments.



Since introducing the first paper drilling machines in the 1930's, Challenge has been producing the highest quality, longest lasting line of paper drills available. With a full line of drills from one to ten spindles, Challenge has the perfect drill for any application.

JF Single Spindle Drill

Electric, manual foot pedal operated drill with auto-trip side guide for multi-hole applications.

- 2" Drilling Capacity
- 13 Drill Bit Sizes (1/8 - 1/2")
- Automatic Paper Chip Removal
- Adjustable Margins
- Built to Last



EH-3C Three Spindle Drill

The hydraulic operated EH-3C has been the industry benchmark for three spindle paper drills for over 30-years.

- 2.5" Drilling Capacity
- 13 Drill Bit Sizes (1/8 - 1/2")
- Automatic Paper Chip Removal
- Multi-Hole Drilling- up to 3 Holes
- Fast and Easy Head Adjustment
- Automatic Drill Return



MS-5 Five Spindle Drill

Hydraulic operation makes the MS-5 ideal for most commercial applications including medical and automotive.

- 2.5" Drilling Capacity
- 13 Drill Bit Sizes (1/8 - 1/2")
- Automatic Paper Chip Removal
- Adjustable Backgauge and Side Guides
- Multi-Hole Drilling- up to 5 Holes
- Optional Narrow Heads Available



MS-10 Ten Spindle Drill

High production drilling up to 10 holes in a single stroke. Designed for special applications and commercial binderies.

- 2.5" Drilling Capacity
- 13 Standard Drill Bit Sizes (1/8 - 1/2")
- 9 Large Hole Drill Bit Sizes (9/16 - 1-5/8")
- Multi-Hole Drilling- up to 10 Holes
- Variable Speed Stroke Control
- Multi-Splined Drive Shaft



Perfecta Cut-O-Drill

The Perfecta Cut-O-Drill Cutting and Drilling System optimizes the processing of offset and digital printing and guarantees quick and economic processes. Cost and space requirements are reduced and the combination of cutting and drilling operations do not require re-piling or intermediate storage of the stack.



Versatile Applications Include:

- Paint Can Labels
- Double perforation for loose-leaf collections, pre-perforated writing pads or exercise books, pre-perforated business reports or contract forms.
- Quadruple perforation for loose-leaf collections or ring binders
- Multi-perforation for wire-comb bound books, brochures, user's manuals, atlases, handbooks, advertising documents, conference or meeting agendas, or calendars with wire-comb or spiral binding

Triumph®

Electric Programmable 4850-EP



	4850-EP	5550-EP	5551-EP
Cutting Width:	18.5"	21.6"	21.6"
Cutting Height:	3"	3.6"	3.6"
Auto Clamp & Cut:	Electric	Hydraulic	Hydraulic
Programmable:	Yes	Yes	Yes
Adj. Clamp Pressure:	No	Yes	Yes
Light Beam Safety:	No	No	Yes

Hydraulic Programmable 5550-EP & 5551-EP



Triumph paper cutters are the most widely-distributed manual and electric/hydraulic guillotine cutters worldwide. These machines feature the latest in cutting automation for office, digital, and commercial print and copy environments. Every model offers the very best combination of features and affordability. Triumph cutters range in size from a 15" tabletop to a 28" floor-model.

Titan 265



	230	265	305
Cutting Width:	23"	26.5"	30.5"
Cutting Height:	3.25"	4"	4"
Auto Clamp & Cut:	Hydraulic	Hydraulic	Hydraulic
Programmable:	Yes	Yes	Yes
Adj. Clamp Pressure:	Yes	Yes	Yes
Light Beam Safety:	Yes	Yes	Yes
Air Table:	N/A	Yes	Yes

Champion 305XG, XT



Challenge paper cutters are designed for high-volume commercial print and digital environments. Manufactured in the USA with proven quality for over 110 years. They range in size from 12" to 37", and have various programmability options. Every Challenge paper cutter features hydraulic cutting and clamping, and is designed to last for many years.

PERFECTA Cutting Systems



	76	92	115
Cutting Width:	29.9"	36.2"	45.3"
Cutting Height:	4.3"	4.7"	6.5"
Cycle Rate Per Min.:	50	50	45
Mechanical Knife:	Yes	Yes	Yes
Programmable:	Yes	Yes	Yes
Adj. Clamp Pressure:	Yes	Yes	Yes
Light Beam Safety:	Yes	Yes	Yes

Perfecta is the world leader in highly-automated commercial cutting and handling systems designed for 24/7 print, bindery, and converting customers. These German-designed and manufactured cutters are the most productive on the market today, featuring flywheel-activated cutting and hydraulic clamping systems. Perfecta cutters range in size from 30" to 88". Available accessories and peripheral devices such as stack lifts, joggers (with or without counting scales), transfer tables, loaders, and unloaders, can make your operation up to 300% more efficient with a single cutter.

Numbering, Perfing, Scoring and UV Coating



GW-6000

	GW-6000	GW-8000	GW-12000
Speed:	6000	8000	1200
Max Sheet Size:	18 x 18"	18 x 18"	18 x 18"
Numbering Positions:	10	100	100
Drive Type:	Electronic	Pneumatic	Pneumatic
No. Job Memories:	N/A	100	100



GW-12000

Graphic Whizard is the world's leading manufacturer of numbering systems. Capable of producing 12,000 sheets an hour, and available in friction or horizontal air feed, there is a model appropriate for any job and budget. They can print up to 100 numbers per page, and the numbering heads are adjustable individually and can be rotated 360 degrees. All Graphic Whizard numbering machines can perf, score and slit during the numbering process. A wide variety of perfing and scoring wheels are available, including microperf.

CreaseMaster Series Impact Scoring Systems

Impact creasing evolved because of the growing digital markets, and the difficulty in finishing the digitally printed material. There are four models to choose from in our CreaseMaster series starting with the economically priced hand-feed "MF" and friction feed "PRO-F" to our "PLUS+" and "PLATINUM" units which utilize the "digital-friendly" horizontal air/suction feeders.



	CMP-MF	CMP-PRO-F	CMP-PLUS+	CMP-PLATINUM
Speed:	2000	2000	3600-4600	8000
Feed Type:	Hand-Feed	Friction	Air	Air
Controller:	Digital	Digital	Digital	Touch-Screen
Max Sheet Size:	18 x 25.5"	18 x 25.5"	18 x 25.5"	18 x 25.5"
Stock Weight:	12lb. - 18pt	12lb. - 18pt	12lb. - 18pt	12lb. - 18pt

VividCoater

By producing richer and more vibrant colors on digitally or offset printed pieces, the VividCoater offers the on-demand print market the opportunity to have more effective and expressive printed products at a very low cost per page. The VividCoater is a low maintenance ultra violet cured coating system that produces a high quality finish to the printed sheet. With a wide range of finish options, including matte to high gloss, UV coating not only makes printed products lively and brilliant, but also offers powerful protection against friction and fading. Touch-screen computerized control makes the VividCoater a true on-demand solution for today's market. As with all GraphicWhizard machinery, this coater is covered by the factory's 5-year limited warranty.



Max. Speed: 3500 sph (hand feed) - 50000 (auto feed)
 Stock Size: 5.5 x 8.5" - 21.5 x 26"
 Stock weight: (80# cover - .25 board)



714XLT



870



352SA



FLEXIFOLD

We have a large selection of table top and floor model folders, inserters and tabbers, from Horizon, Challenge, MBM, Formax and Baumfolder. With products for the office, to in-plants and commercial print shops, PFS has the perfect paper folder for your needs.

	714XLT	870	352SA	Flexi-Fold
Paper Size Min.:	3 x 5"	4 x 6"	3.4 x 3.4"	3 x 5"
Paper Size Max.:	14 x 20"	14 x 20"	13.4 x 18"	14 x 20"
Speed Per Hr.:	35,000	30,000	35,000	35,000
Stock Weight:	?	9lb-65lb	13lb-90lb	?
Auto Set-up:	No	No	Yes	Yes
8 page Available:	Yes	No	No	Yes

Horizon

AFC-564A



The large and interactive icon-based touch-screen on the AFC-564A and AFC-744AKT were designed for fully automated set-up.

AFC-744AKT



The AFC-564A computer controlled cross-folder is precision engineered for quality folding in minimum space. The large icon-based touch-screen provides a simple, powerful user interface. The AFC-564A combines Horizon's advanced folding technology with simple operation and superior folding quality that can be enhanced with Horizon's unique i2i network flow system.

13 fold patterns – including 8-page cross fold, letter fold, and direct mail fold – are set by selecting fold pattern and inputting sheet size on the large LCD touch-screen. 10 different sections are set automatically by stepper motors.

Min. Sheet Size: 5.1 x 5.9"
 Max. Sheet Size: 22 x 33.5"
 Maximum Pile Height: 25.5"

The AFC-744AKT B1-format folder is the newest in Horizon's expanding line-up of quality-engineered folders that combines simple operation, quick changeover, high production speed, and superior fold quality. Compatible with the Horizon i2i network flow system allows you to remotely monitor work in progress, productivity, set-up conditions, and other key production information.

14 fold patterns are available, including 16-page cross-fold, 8-page cross-fold, and direct mail fold. The folder automatically calculates and then sets each of eight variable sub-stations, including the feed guide, register guide, 1st to 4th buckles, and two knife stoppers.

Min. Sheet Size: 8.3 x 8.3"
 Max. Sheet Size: 29.1 x 43.3"
 Maximum Pile Height: 29.5"

QC-S30 & SPF-9/FC-9

The QC-S Series friction collators are expandable up to 3 towers / 30 bins, and interface with the SPF/9A/FC-9A bookletmaking system and optional trimmer (see right). The QC-S300 collators and SPF9A/FC9A finishers feature full automation with touch-screen control. Available options include the PS=P61 corner / side stapler and the MF-1 corner stapler and letter folder.

Feed Type: Friction
Paper Size: 8.5 x 11" up to 12.5 x 17"
Production Speed: 2,100 booklets/hr



SAC-150A

The SAC-150 15-bin friction-feed collator features advanced programming through a touch-screen display, remote control, and highly-reliable feeding. Up to four towers can be combined to form a 60-station collator system.

Optional accessories include in-line stacker and stitching - folding - face trimming units for in-line bookletmaking.

Feed Type: Friction
Paper Size: 5.8 x 8.3" - 12.5 x 18.5"
Production Speed: up to 6,500 sets/hr



HOF-30 High-Speed Off-line Sheet Feeder

The HOF-30 high-speed feeder provides production speed and flexibility for digital print environments. It feeds pre-collated digital output at up to 27,000 sheets per hour and can be combined with Horizon SPF-20/20A or StitchLiner saddle stitching system. By adding a collating tower, the finishing system can effectively serve print shops that perform both offset and digital printing under one roof. A mark reader also enables the HOF-30 to handle personalized, variable sheet count documents with integrity and verification. An optional cover feeder provides additional production flexibility.

Feed Type: Air-Suction (Rotary Pulse Feeding)
Paper Size: 7.87 x 10.82" up to 13.77 x 19.68"
Production Speed: up to 27,000 sheets/hr



SpeedVAC-100

The VAC-100 collator provides flawless feeding on virtually any stock. The system is expandable from one to six towers, with the ability to run in both directions at full rated speed. All system controls are centralized on the simple but powerful icon-based touch-screen console. Accessories include single and dual-pile stackers, joggers, stitchers and the SPF-20, SPF-200A, and StitchLiner series bookletmakers.

Feed Type: Air-Suction (Rotary Pulse Feeding)
Paper Size: 4.75 x 5.8" - 14 x 20"
Production Speed: up to 10,000 sets/hr

SPF-20/FC-20 Stitching/ Folding & Trimming

Paper Size: 4.8 x 7.1" - 13.7 x 19.6"
Book Thickness: up to 20 sheets / 80 pages
Production Speed: up to 4,050 booklets/hr



SPF-200A/FC-200A Automated Stitching/ Folding & Trimming

Paper Size: 4.7 x 7.1" - 14 x 20"
Book Thickness: up to 24 sheets / 96 pages
Production Speed: up to 4,500 booklets/hr

The Horizon SPF/FC-200A fully-automated combination stitcher/folder and face trimmer is equipped with a user-friendly 10.4" intelligent color touch-screen that provides advanced set-up automation and centralized control. The SPF/FC-200A features an integrated hand-marry station for increased flexibility, and a built-in error eject tray which allows for non-stop production at speeds up to 4,500 booklets per hour.



StitchLiner

The StitchLiner bridges the production gap between existing flat sheet collating / bookletmaking and conventional high-volume saddlestitching lines. Offset or digitally printed flat-sheet signatures are fed from the SpeedVAC collator to produce true saddle stitched booklets with full bleed trimming, at speeds up to 11,000 (two-up) booklets per hour. Professionally finished booklets up to 200 pages are fully comparable with booklets produced by traditional saddle stitchers.

Paper Size: 5.6 x 8.2" - 13.7 x 19.6"
Book Thickness: up to 50 Sheets / 200 pages
Production Speed: up to 5,500 booklets/hr



BQ-P6

Never before has a compact binder offered as much versatility as the BQ-P6 (binder, taper and padder). Able to produce perfect binds and spine taped books at a rate of up to 140 books an hour, the BQ-P6 is ideal for users that have divergent, low-volume binding demands. Adding the option of padding up to 480 note-pads an hour makes this compact unit a truly productive and unique option for many office and print environments.

Binding Thickness: up to 1"
Cycle Speed: up to 140 books/hr
Book Dimensions: 2 x 3.25" - 12.4 x 8.7"



BQ-150

The BQ-150 features single person operation and quick, easy setups. Changeover from perfect binding to padding is accomplished by the press of a button. With automatic cover clamping and a unique spine roughening system this binder is highly productive in both perfect binding and padding applications.

Binding Thickness: up to 1.2"
Cycle Speed: up to 250 books/hr
Book Dimensions: 5.8 x 4.1" - 11.8 x 15.7"
Spine Preparation: Roughing & Notching



BQ-270C

The BQ-270C features include an intelligent touch-screen control console, newly-developed adhesive application and side-gluing system, automatic air-suction cover feeding with in-line scoring, job programming, and same-location loading and unloading for easier single-person operation.

The BQ-270C, with its state-of-the-art design, compact configuration, and full automation, is positioned to meet the demands of the short-run, print-on-demand book market.

Binding Thickness: up to 2"
Cycle Speed: up to 500 books/hr
Book Dimensions: 5.9 x 4.2" - 12.5 x 12.5"
Spine Preparation: Roughing, Notching & Milling



BQ-460

The BQ-460 heavy-duty four-clamp semi-automated perfect binder combines superior quality with touch screen control. Features include an interactive touch screen control for ease-of-operation and semi-automated set-up.

The BQ-460 is suitable for short, medium and long run-lengths, and on-demand binding applications. Available options include the HT-70 three-knife trimmer as a standalone unit or in-line with the SL-40 cooling tower.

Binding Thickness: up to 2.1"
Cycle Speed: up to 1,350 books/hr
Book Dimensions: 4.3 x 5.7" - 12.5 x 12.5"



BQ-470

The BQ-470 is a heavy-duty four clamp fully-automated perfect binder that combines superior quality with an icon-based touch screen control. This binder features a customer-replaceable glue tank unit for both EVA and PUR adhesives (option).

Binding Thickness: up to 2.5"
Cycle Speed: up to 1,350 books/hr
Book Dimensions: 4.2 x 5.7" - 12.5 x 12.5"



CABS 5000

The CABS 5000 is a commercial-duty 15-clamp binding system that employs a digital caliper, color touch screens, and advanced automation to achieve ultra-fast makeready and changeovers usually under 10 minutes. The system can be expanded from 6 to 36 gathering stations, and the HT-100 in-line three-knife trimmer trims up to 4". Quick set-up flexibility is now available in the range of 5,000 top-quality books per hour.

Binding Thickness: up to 2"
Cycle Speed: up to 5,200 books/hr
Book Dimensions: 5.8 x 4.2" - 13.7 x 10.2"



DocuPunch

Accurate mid-volume automatic punching on-demand. Punches preprinted, collated documents directly from your copier or printer (including mixed stocks from 16 lb. bond to 110 lb. index). Also punches tabs pre-collated into the finished sets.

Designed with the On-Demand market in mind... setup time in less than a minute, die changes in seconds and hands free operation so your operator is free to perform other tasks.

Available is a wide range of die patterns including: double loop wire, plastic coil, plastic comb, VeloBild®, loose leaf styles, and more.

Punches up to 30,000 sheets/hr
 Sheet size: 5.5 x 5.5" - 13 x 12"
 Book Dimensions: 5.8 x 4.2" - 13.7 x 10.2"



AlphaDoc

High-speed automatic punching on-demand. Punches preprinted, collated documents directly from your copier or printer (including mixed stocks from 16 lb. bond to 110 lb. index). Also punches tabs pre-collated into the finished sets.

Available is a wide range of die patterns including: double loop wire, plastic coil, plastic comb, VeloBind®, loose leaf styles, and more.

Punches up to 48,000 sheets/hr
 Sheet size: 5.5 x 5.5" - 13 x 13"



EX Series EX380 - EX610

The Lhermite® EX Series of automatic punches is an absolute must for any bindery that demands precision punching at very high output speeds and will punch pre-printed collated documents with or without mixed stocks. The EX series is capable of punching up to one million sheets of paper in just one 8-hour shift. An optional attachment allows you to punch tabs collated into the finished sets. The EX series is available with a continuous conveyor delivery or high pile stacking delivery.

Available is a wide range of die patterns including: double loop wire, plastic coil, plastic comb, VeloBind®, loose leaf styles, and more.



	EX380	EX610
Punches up to:	125,000 sheets/hr	125,000 sheets/hr
Sheet size:	4.25 x 3.75" - 15 x 15"	4.25 x 3.75" - 24 x 20.75"



Performance Design, Inc. (PDI) is a recognized leader in the Graphic Arts Industry. PDI manufactures and distributes innovative, high quality, affordable Desktop Paper Punching and Document Binding Equipment. No matter the size or type of business you are in, Performance Design has a document handling solution to fit your needs.

RAF-117



Upgrade your current PDI HD punch to the RAF-117 and watch your profits soar.

- Auto-feed commercial punch
- Sheet size: 5.5 x 8.5" - 8.5 x 11"
- Punches up to 30,000 sheets/hr
- Interchangeable dies: coil, wire, comb & more

APES-14



Increase your production without breaking the bank. Add the APES-14 to your existing HD punch and increase your productivity today.

- Automatic Paper Ejector & Stacker Module
- Attach to your new or existing HD commercial PDI punch
- Increase production by 40%

HD7000



Protect your investment with the HD7000 "QCDS" Quick Change Die System.

- Commercial 14" punch
- Punches up to 40 sheets/cycle
- Interchangeable dies: coil, wire, comb & more
- Available options: APES-14 or RAF11

OD4000



Punch and bind all of your documents with a single versatile OD system.

- Heavy-duty 11" punch
- Punches up to 17 sheets/cycle
- Interchangeable dies: coil, wire, comb & more
- Available binding modules for coil, wire & comb



CB30QS Automatic Inserter

Automatically inserts, cuts, and crimps both ends of plastic spiral element from 8mm to 18mm (1/4" to 5/8") into pre-punched documents. Binding edge from 4-1/2" up to 12". Cycling speeds up to 1200 per hour and practical output of 250-500 books per hour. Hands-free foot pedal allows two-handed document placement.



Wire-O® Bind

A highly successful companion to the AlphaDoc® and DocuPunch® punching machines, the Wire-O® Bind is a high speed, instantly adjustable binding machine with a patented closing unit that positions and feeds the book without the need for stops or paper guides. Binds books 1/4" to 1-1/4" at a rate up to 1000 books per hour.



Preferred Pack

1519ECMC

This compact L'Sealer with Magnetic Hold down and power discharge conveyor with attached Tunnel is only 74 inches in total length. Featuring new "Band Seal" Technology - Will seal PVC or Polyolefin Shrink Films with no smoke or residue. Tunnel features Live Roller ROD Conveyor with fully Re-Circulating Air Chamber, AC variable Speed Conveyor, 0 to 60 FPM, and Automatic Cool Down with Shut Off. A great machine for low to medium production speeds of 8 to 12 packages per minute. Available in 110 volts or 220 volts.

Seal Dimension: 15 x 19"
Tunnel Dimension: 20 x 16 x 6"
Cycle Speed: 12 pkgs. per Minute



PP1622MK-Combo

This fully adjustable combination L'Sealer with attached Shrink Tunnel includes the latest "Micro-Knife" Technology - No more seal wires to replace. The L'Sealer is mounted on linear bearings, and easily moves forward or backward to center product into Tunnel. Discharge conveyor on L'Sealer also adjusts up or down. Shrink Tunnel features a fully Re-Circulating Air Chamber with Live Roller ROD Conveyor. Convenient crank handle on Tunnel allows operator to move tunnel up or down to match sealer conveyor height. Uni-body frame makes this unit easy to move around.

Seal Dimension: 16 x 22"
Tunnel Dimension: 28 x 18 x 8"
Cycle Speed: 15 pkgs. per Minute



Paddy-Wagon



Pack-Rak



Turn your padding operation from messy inconvenience to a high-capacity profit center with simple 1-2-3 operation:
(1) Tilt & Load (2) Clamp (3) Tilt & Pad

- Sample Capacity 15,000 8-1/2 x 11" Sheets
- Portable
- Heavy-Duty Casters
- Welded Tubular Steel Construction

Makes every job easy for printers, mail rooms, copy shops, and binderies.

- Holds 11 x 17" Stock
- 500 lb Total Capacity
- 12 Shelves: 4 Fixed, 8 Adjustable
- Portable
- Heavy-duty Industrial Casters
- Side Handles
- Solid Construction



Digital In-Line Solutions

*“With Standard, digital printing isn’t just dots on paper...
It’s total Solutions.”*

From feeding, to imaging, to finishing. It’s building fast, flexible, and dependable workflows to produce finished documents with full integrity. It’s combining best-of-breed solutions into reliable print-and-finish systems that will help you retain print clients, attract new ones, and let your profits soar. It’s finding a company that can help you put together the right elements to fit your digital printing needs for run lengths from 1 to 100,000. Standard has the most comprehensive range of fully-integrated feeding and finishing solutions, for all leading-edge digital printers.

BQ-340DF

The Horizon BQ-340DF is a fully dynamic perfect binding system with optional in-line three-knife trimming that employ’s Xerox’s patented DigiFinish® architecture for automated job set-up and end-to-end document integrity.

This binder can be equipped with the Horizon HT-30 In-line Three-knife trimmer (pictured).



SPF-20XII

The Horizon SPF-20XII is designed for in-line operation with the Xerox 6180 production publisher and the Horizon BQ-340 perfect binder. The SPF-20XII features an integrated high-capacity stacker and vacuum cover feeder for professional-quality bookletmaking with highly automated set-up and operation.



ColorWorks™ 2000

The Horizon ColorWorks™ 2000 is an innovative new document finisher designed exclusively for operation in-line to the Xerox DocuColor 2000 Series Digital Color Presses. The system performs head and foot bleed trimming, scoring, stitching, folding, face trimming, and stacking for the ultimate in finishing flexibility.



DIGITAL IN-LINE FINISHING

Your Complete Source for Graphic-Arts, Print and Finishing Machinery & Support

Pre-Press.....	RIPs & Servers, Software, Scanning devices, Proofing & CTP
Printing Presses	Offset & digital ⇒ Up to 10-color with perfecting & coating
Paper Cutters.....	15" electric ⇒ 88" Fully-programmable hydraulic / mechanical
Paper Drills	Single-head tabletop & multiple-head, floor-model, hydraulic
Paper Folders.....	Tabletop office ⇒ Floor-model bindery / specialty applications
Collators / Bookletmakers	Office ⇒ Deep-pocket, air-feed, bindery
Perfect Binders	Single-clamp tabletop ⇒ Multi-clamp bindery
Staplers / Stitchers	Tabletop staplers ⇒ 2" Capacity floor-model stitchers
Punch and Bind	Office ⇒ Commercial (Coil, Comb, Wire-O, Velo, Thermal)
Cornerrounders	Tabletop manual ⇒ 4" Floor-model hydraulic
Joggers.....	Tabletop office ⇒ Large-format, floor-model, commercial
Stock Carts.....	Paper storage and movers for every application
Padding Racks & Systems	Manual ⇒ Floor-model, fully-automated
Perf/Score/Slit, Numbering	Tabletop ⇒ Floor-model, commercial
Laminators.....	Tabletop pouch ⇒ Single-side, and wide-format roll
Shrink-Wrap Systems	Tabletop ⇒ Fully-automated L' Bar systems
Used Machinery	Used and fully-refurbished machinery in stock
Parts.....	We offer the highest-quality OEM products available
Supplies.....	Rollers, Plates, Blankets, Binding Supplies, Laminates & Custom



OUR FACTORY-TRAINED
 TECHNICAL STAFF
 SUPPORTS EVERYTHING WE SELL

Authorized Distributor for:

